



# **San Francisco's Leaning Tower: A Luxury Skyscraper That's Slowly Sinking**

The Millennium Tower was meant to be the pinnacle of luxury living, but instead became an engineering nightmare. Keep scrolling to discover how this architectural marvel went awry.





# A Modern Marvel with a Fatal Flaw

## Luxury Living

Completed in 2009, this 58-story residential skyscraper offered panoramic views and high-end amenities.

## Hidden Problem

Residents soon discovered the building was sinking and tilting, creating a modern urban legend.



## The Shocking Numbers

**17in**

### Total Sinking

Distance the tower has sunk since construction

**14in**

### Sideways Tilt

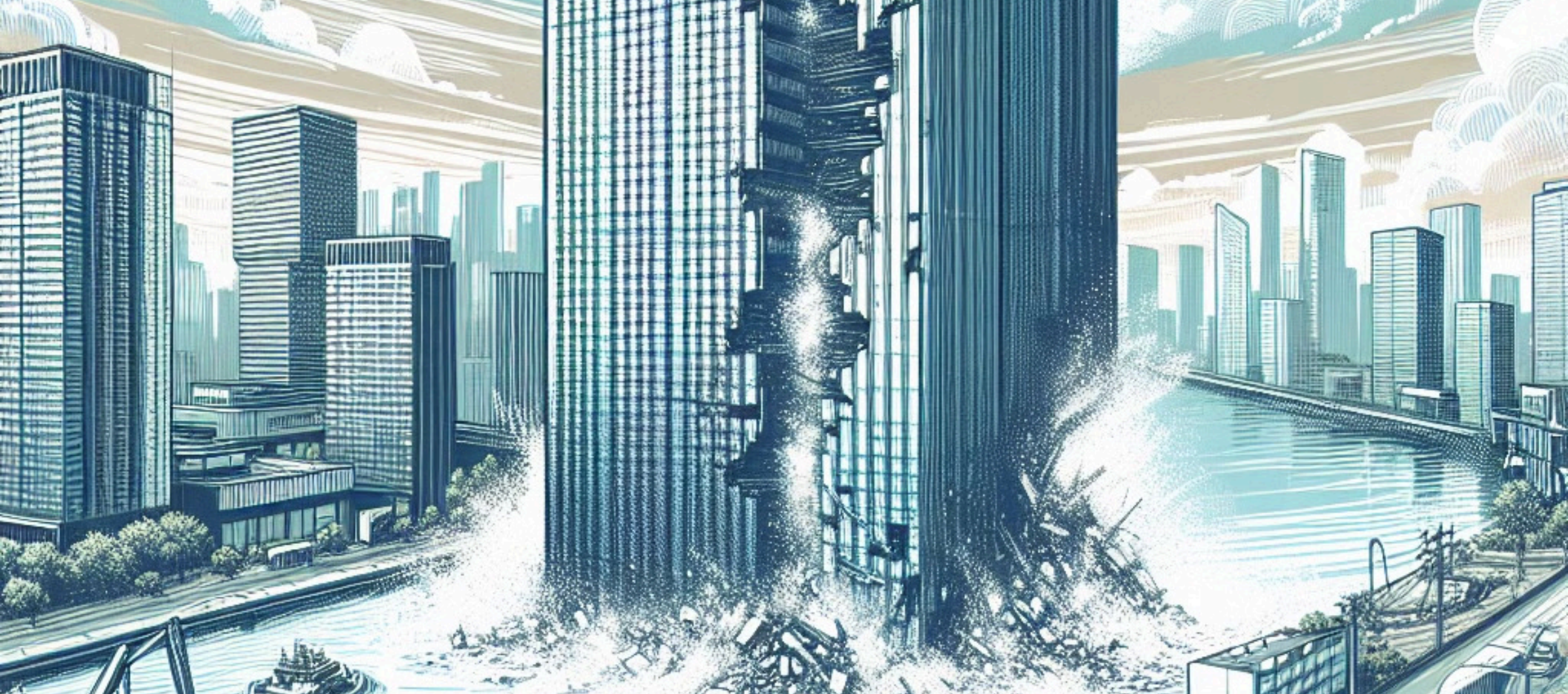
How far the building has tilted from vertical

**635M**

### Weight in Pounds

Creating unprecedented pressure on soil





# Why Is It Sinking?



## Shallow Foundation

Built on dense sand and clay rather than bedrock



## Groundwater Extraction

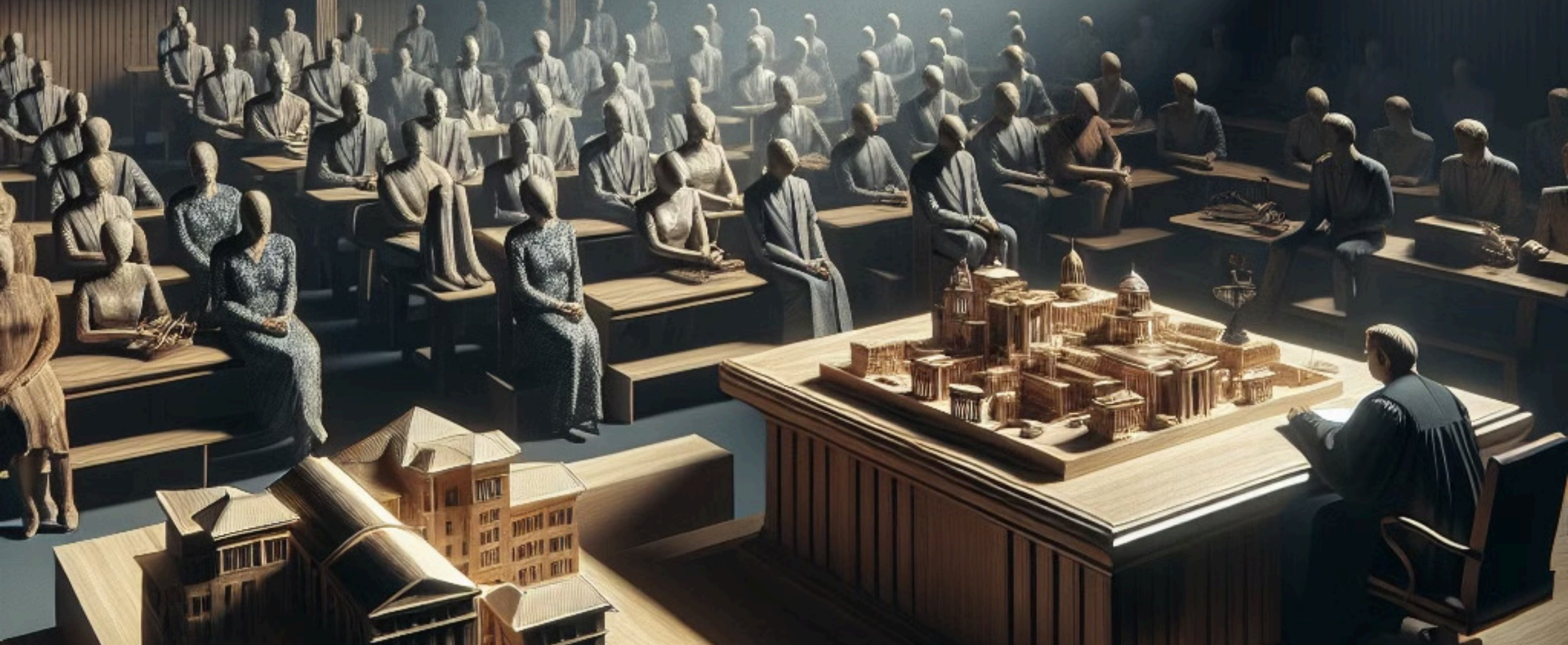
Nearby projects removed supporting groundwater



## Nearby Construction

Transit center and tunnel projects worsened instability





# The Legal Battleground

## Homeowner Lawsuits

Residents saw multimillion-dollar investments potentially crumbling, both literally and financially.

## Multiple Targets

Legal actions against developers, geological consultants, and municipal authorities.

## Costly Solutions

Remediation estimates potentially running into hundreds of millions of dollars.

# Proposed Engineering Solutions



## Underground Pinning

Massive support structures extending to bedrock



## Structural Reinforcement

Strengthening the existing foundation



## Weight Redistribution

Adjusting internal loads to counter the tilt



## Continuous Monitoring

Advanced systems to track movement





# Lessons for Urban Architecture

## 1 Geological Assessment

Comprehensive soil and bedrock analysis is critical before construction begins.

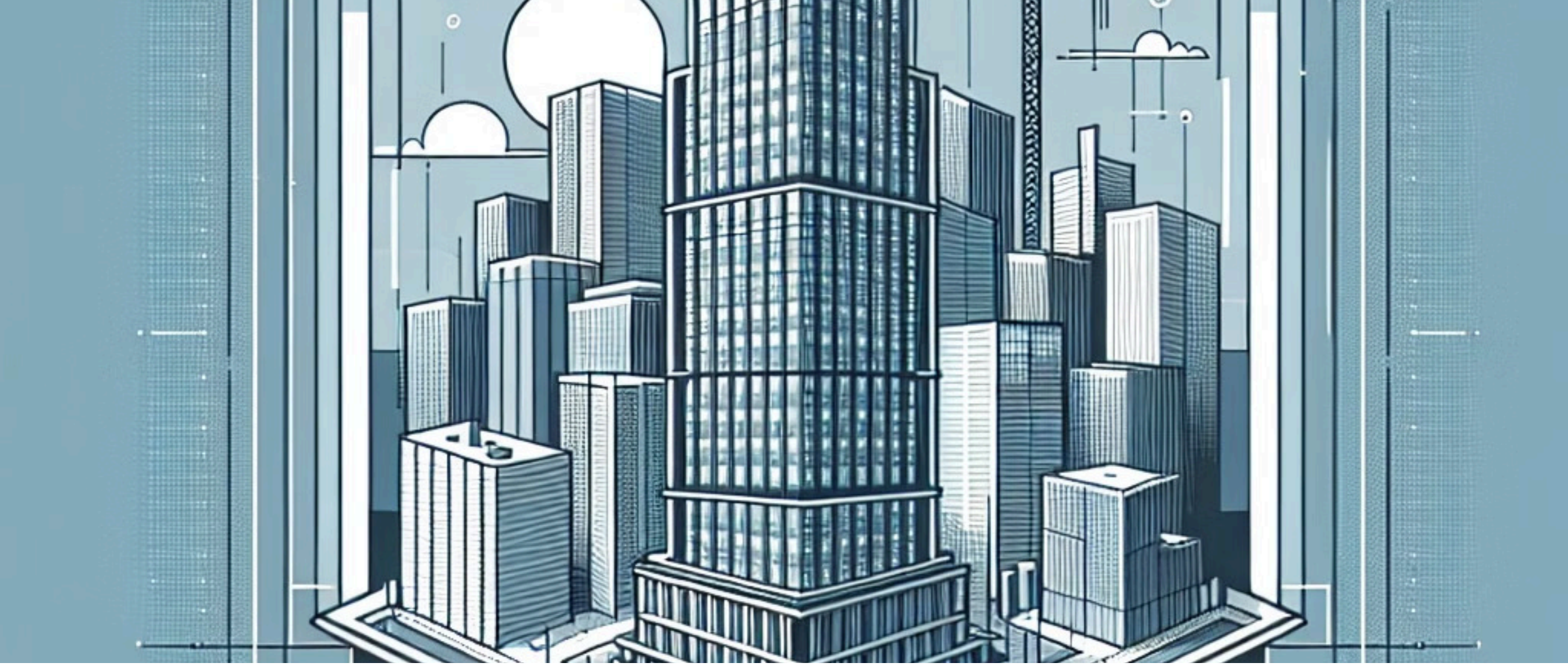
## 2 Environmental Impact

Consider how nearby construction and groundwater changes affect stability.

## 3 Engineering Practices

Robust foundation design must account for long-term geological changes.





# **A Warning for Future Skyscrapers**

The Millennium Tower stands as both a marvel and a cautionary tale. Its ongoing saga reminds us that even the most ambitious architectural projects must respect nature's complexities.

Have you seen this tilting tower in person? Tag someone who needs to know about this engineering drama and share your thoughts in the comments!